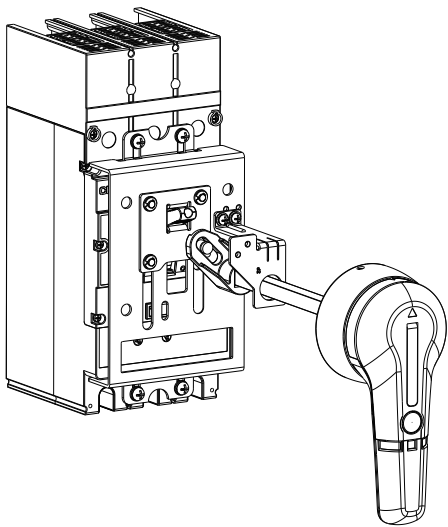


使用说明书

感谢您选购本产品，在安装、使用或维护产品前，请仔细阅读使用说明书。

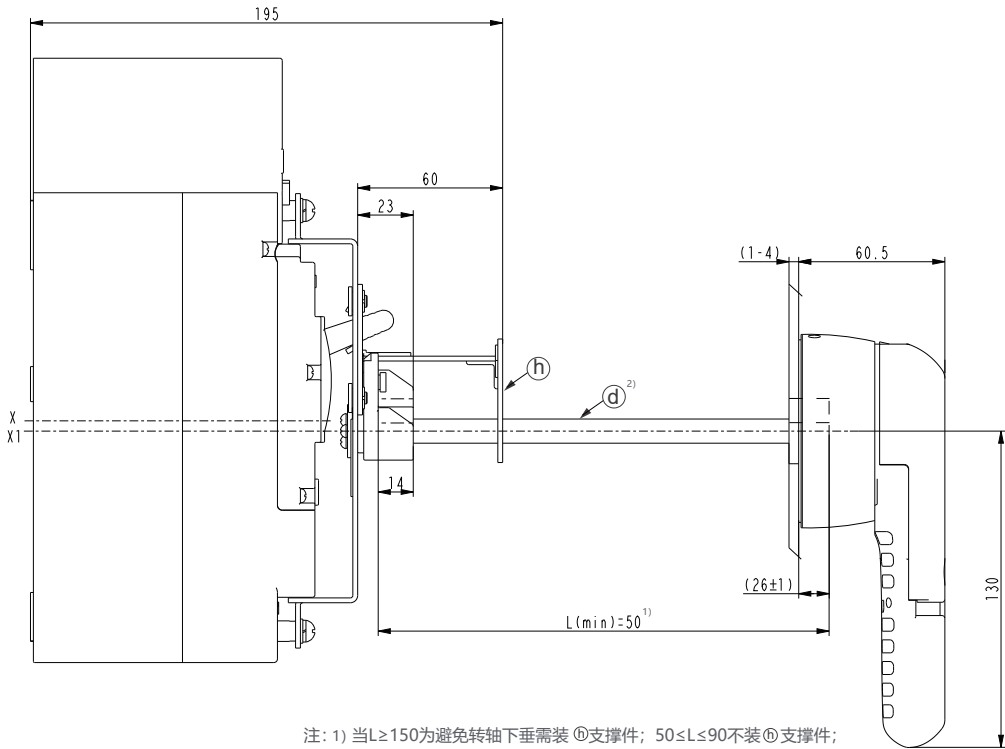
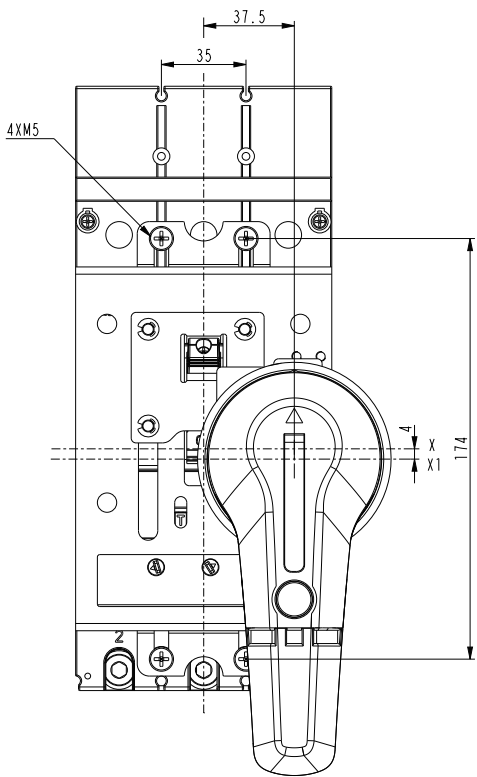


CHNT 正泰

标配附件

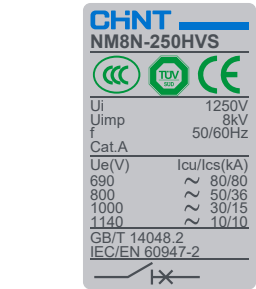
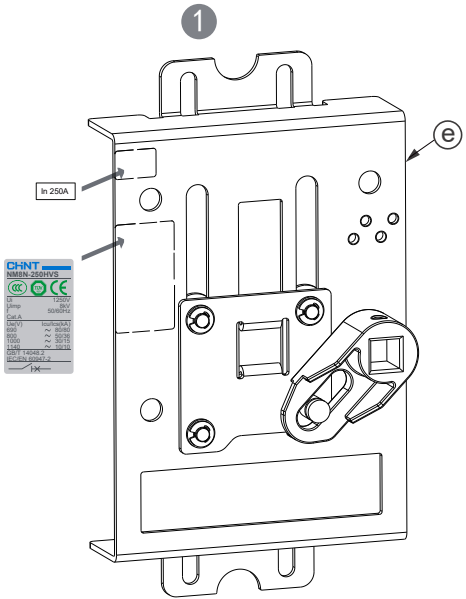
标识	名称	规格	数量	示意图
a	密封圈	—	x 1	
b	螺钉	ST4.2x13	x 4	
c	手柄	—	x 1	
d	转轴	—	x 1	
e	操作机构	—	x 1	
f	螺柱	—	x 4	
g	螺钉	M5x16	x 4	
h	支撑件	—	x 1	
i	螺钉	M4x10	x 2	
j	弹垫	5	x 4	
k	平垫	5	x 4	
l	螺母	M5	x 4	

外形尺寸及安装尺寸



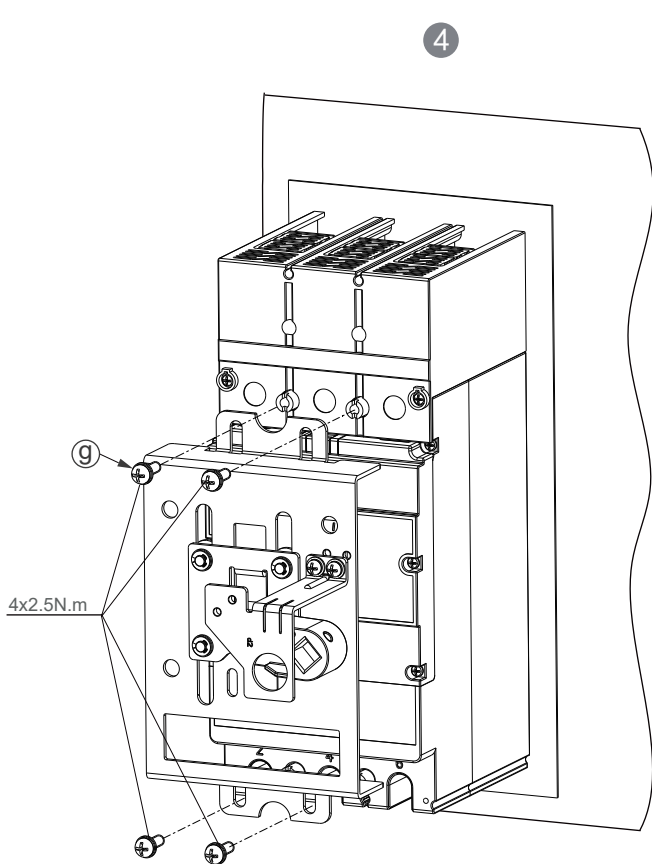
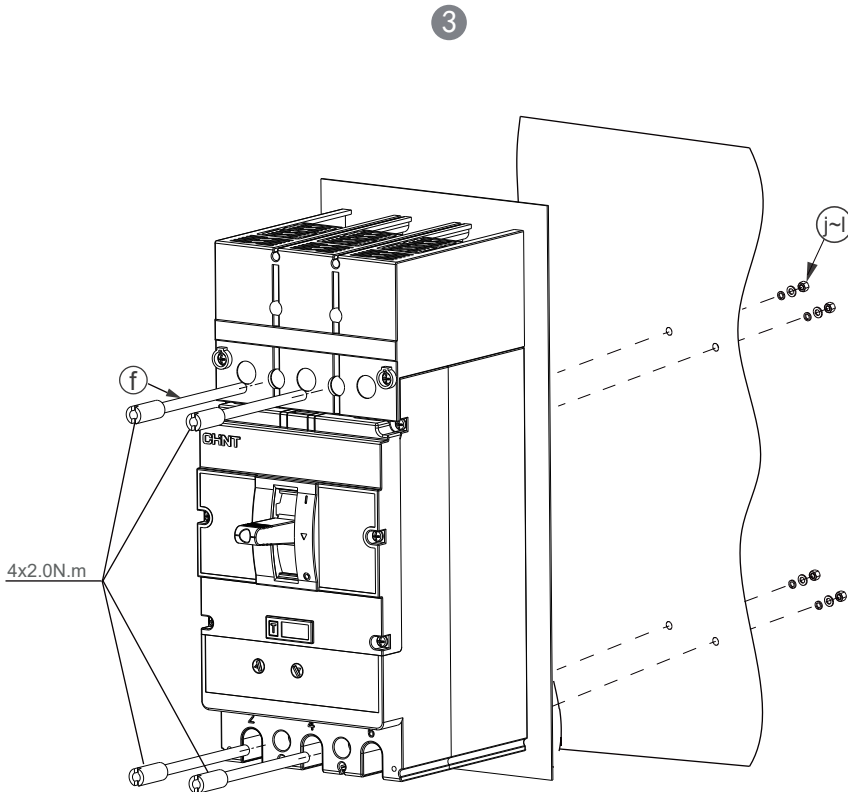
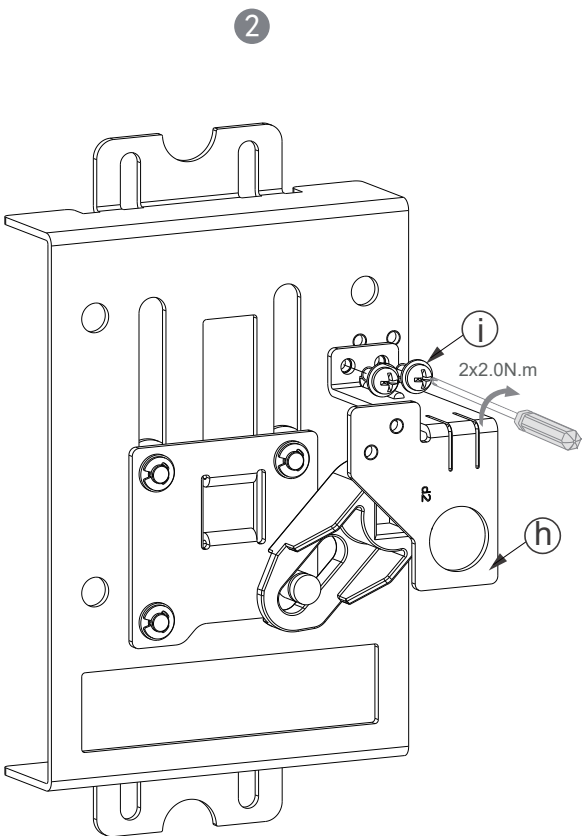
注: 1) 当L≥150为避免转轴下垂需装 ⑩支撑件; 50≤L≤90不装 ⑩支撑件;
2) ④转轴标配长度L=320;

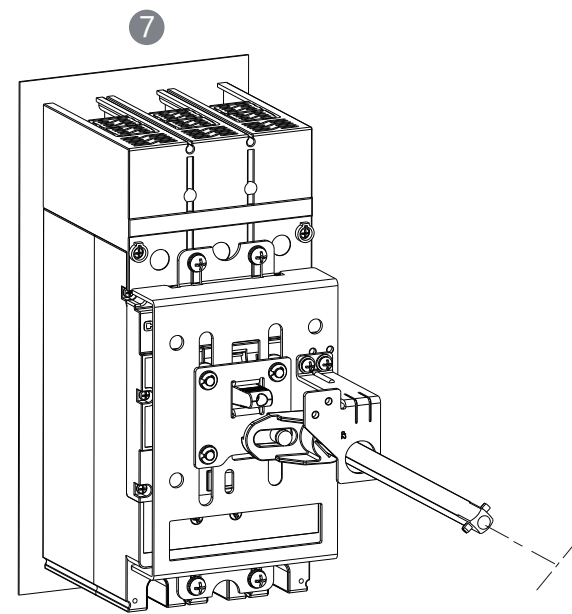
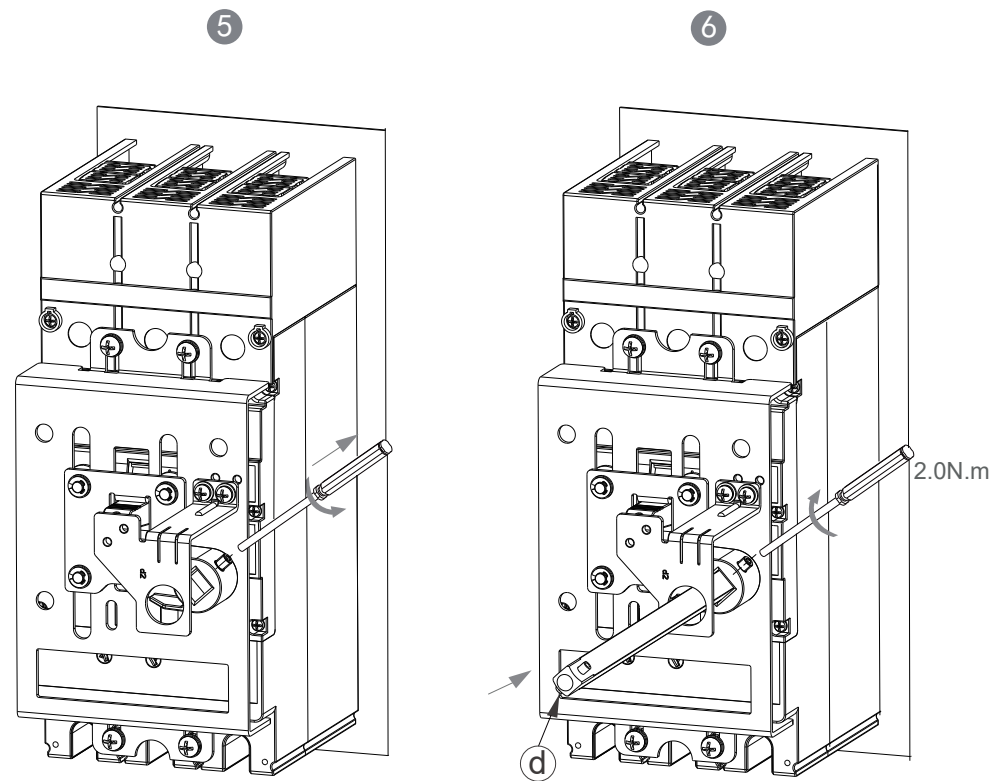
A 安装



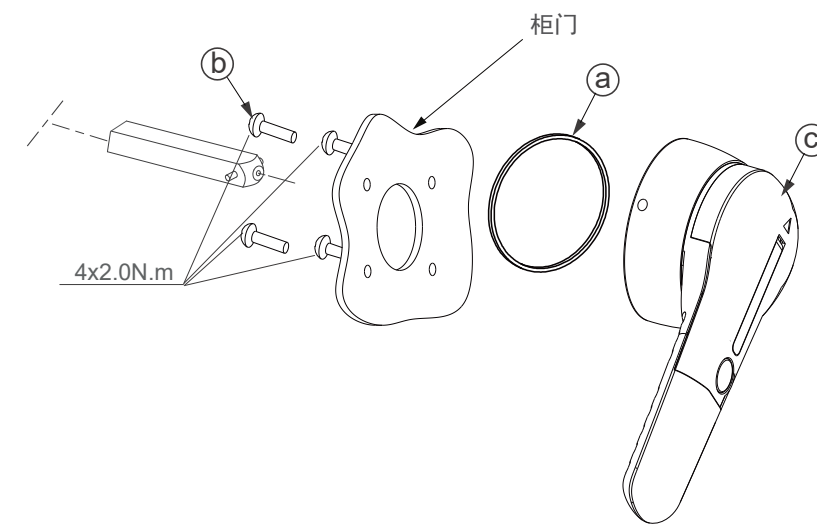
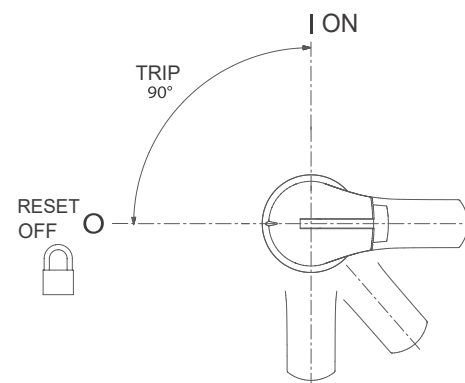
In 250A

铭牌在本体
包装箱内，
需自行粘贴

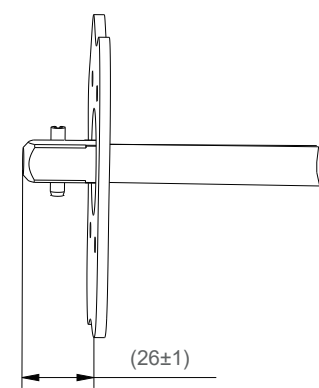
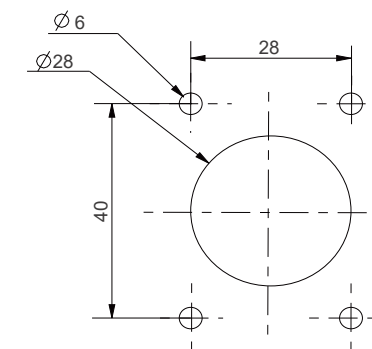




挂锁位置

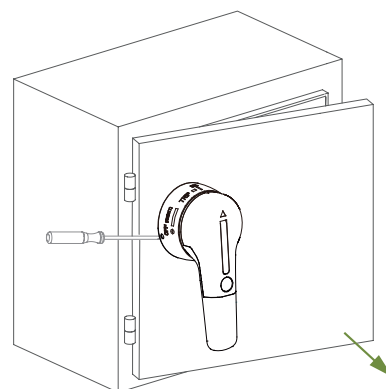
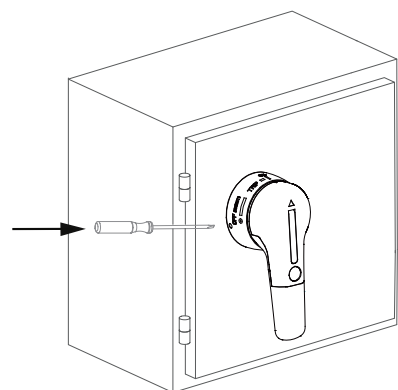
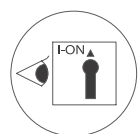


柜门开孔示意图



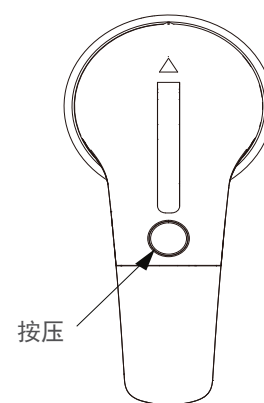
B 解锁

合闸位置开门解锁

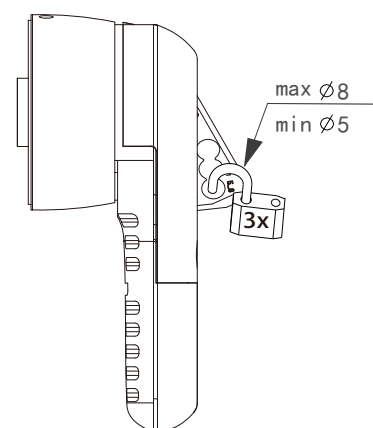


C 挂锁

将手柄旋转在OFF位置



最多可加3把锁



环境保护
 为了保护环境，本产品或其中的部件报废时，请按工业废弃物妥善处理；或交由回收处理站按照国家相关规定进行分类拆解、回收再利用等。
 In order to protect the environment, when the product or its components are scrapped, please dispose of it as industrial waste; or hand it over to the recycling station for disaggregation, recycling and reuse according to relevant national regulations.

浙江正泰电器股份有限公司
 地址：浙江省乐清市北白象镇正泰工业园区正泰路1号
 邮编：325603
 电话：0577-62877777
 传真：0577-62875888

全国统一服务热线
400-817-7777
 欢迎访问：Http://www.chint.net
 欢迎咨询：E-mail:chint@chint.com

