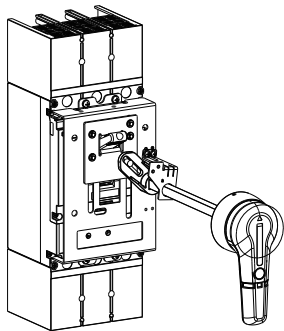


Extended Rotray Handle

Use with M2HV/M3HV



The manufacturer assumes no responsibility for unfavourable consequence resulting from the non-application or incorrect application of the instructions provided herein.

El fabricante no asume ninguna responsabilidad por consecuencias desfavorables que resulten de no seguir las instrucciones, precauciones y advertencias proporcionadas en este documento.

Le fabricant ne saurait être tenu pour responsable des conséquences entraînées par toute utilisation allant à l'encontre des instructions incluses dans ce manuel.

NOARK



WARNING

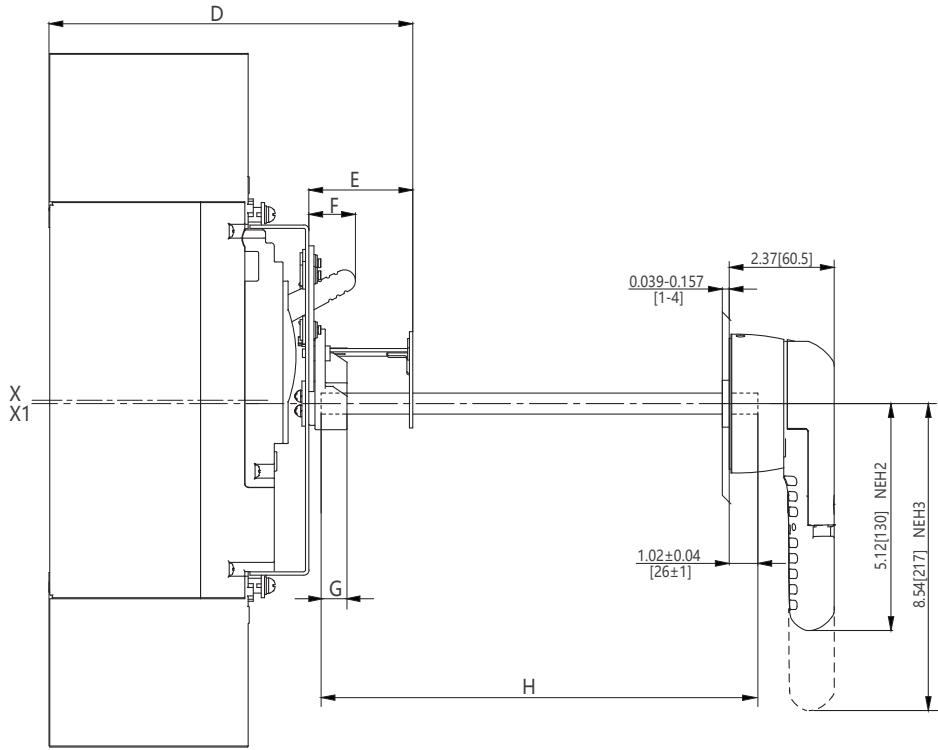
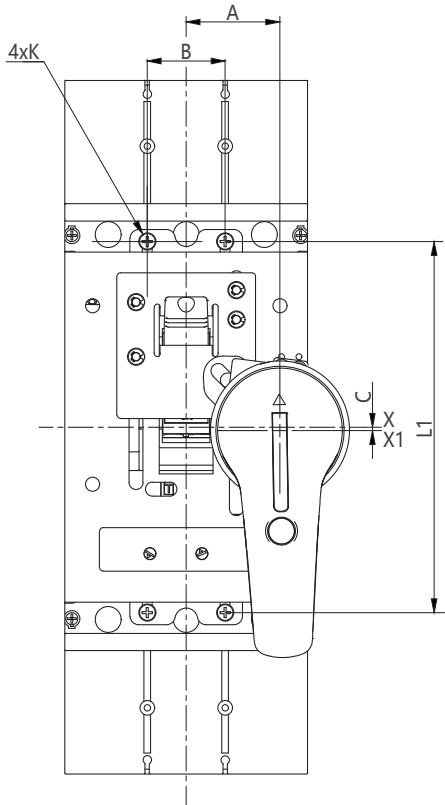
DO NOT ATTEMPT TO INSTALL OR PERFORM MAINTENANCE ON EQUIPMENT WHILE IT IS ENERGIZED. DEATH, SEVERE PERSONAL INJURY, OR SUBSTANTIAL PROPERTY DAMAGE CAN RESULT FROM CONTACT WITH ENERGIZED EQUIPMENT.

ALWAYS VERIFY THAT NO VOLTAGE IS PRESENT BEFORE PROCEEDING WITH THE TASK, AND ALWAYS FOLLOW GENERALLY ACCEPTED SAFETY PROCEDURES.

NOARK IS NOT LIABLE FOR THE MISAPPLICATION OR MISINSTALLATION OF ITS PRODUCTS.

Dimensions

in.[mm]

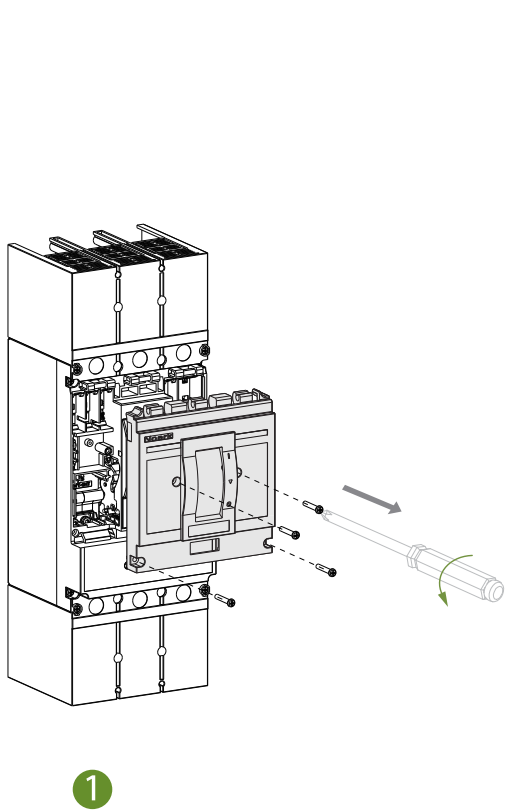


in/mm	A	B	C	D	E	F(Max)	G	H(Min) - (Max)	K	L1
HM2HVA	1.48 / 37.5	1.38 / 35	0.16 / 4	7.68 / 195	2.36 / 60	0.91 / 23	0.55 / 14	1.97 / 50-19.69 / 500	10-24	6.85 / 174
HM3HVB	2.13 / 54	1.77 / 45	0.08 / 2	8.29 / 210	2.37 / 60	1.50 / 38	0.55 / 14	2.76 / 70-19.69 / 500	10-24	8.45 / 214

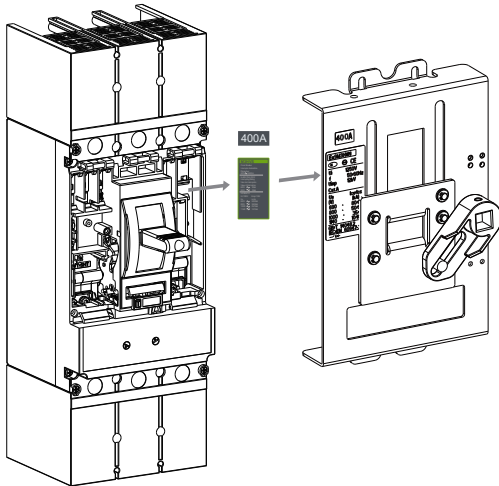
Parts List 1

a	x 1	NEH2B2 / NEH2R2	NEH3B2 / NEH3R2
b	x 4 ST 4.2 x 13		
c	ES20A / ES32A / ES50A	ES26D / ES30D / ES50D	ES20B / ES32B / ES50B
d	HM2HVA	HM3HVB	
e	x 4	x 4	
f	M5 x 16  x 4	M5 x 16  x 4	
g	x 1	x 1	
h	M4 x 10  x 2	M4 x 10  x 2	

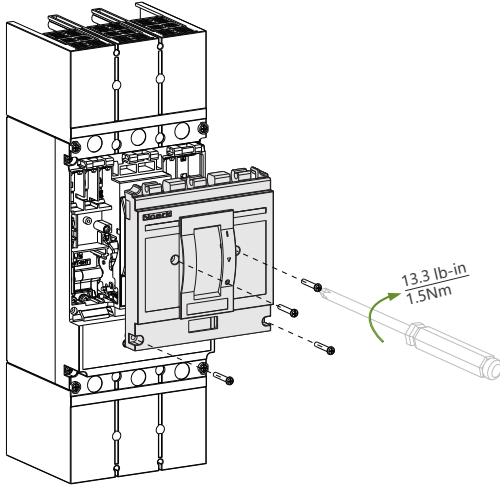
A



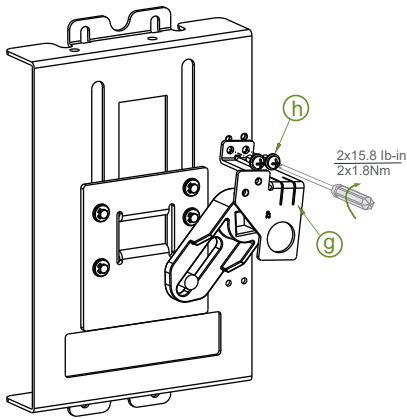
2

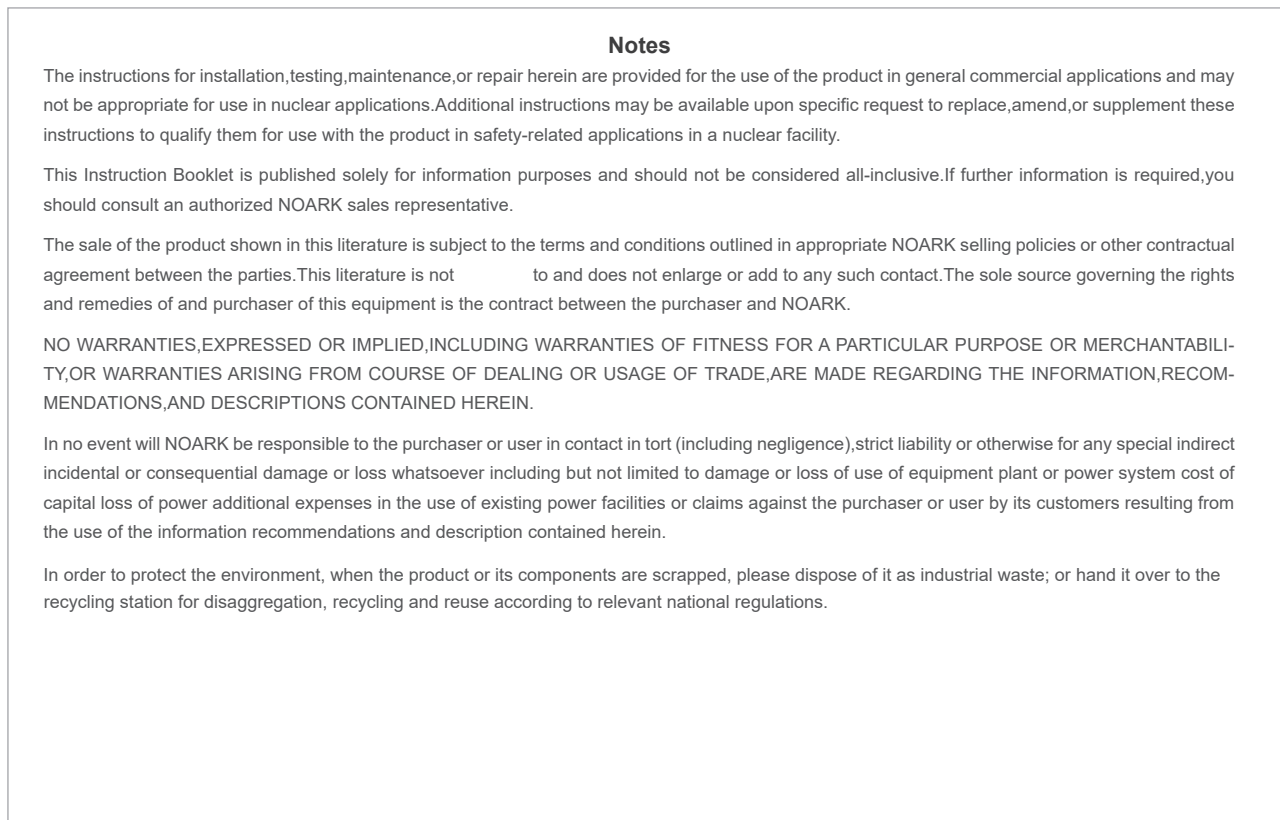
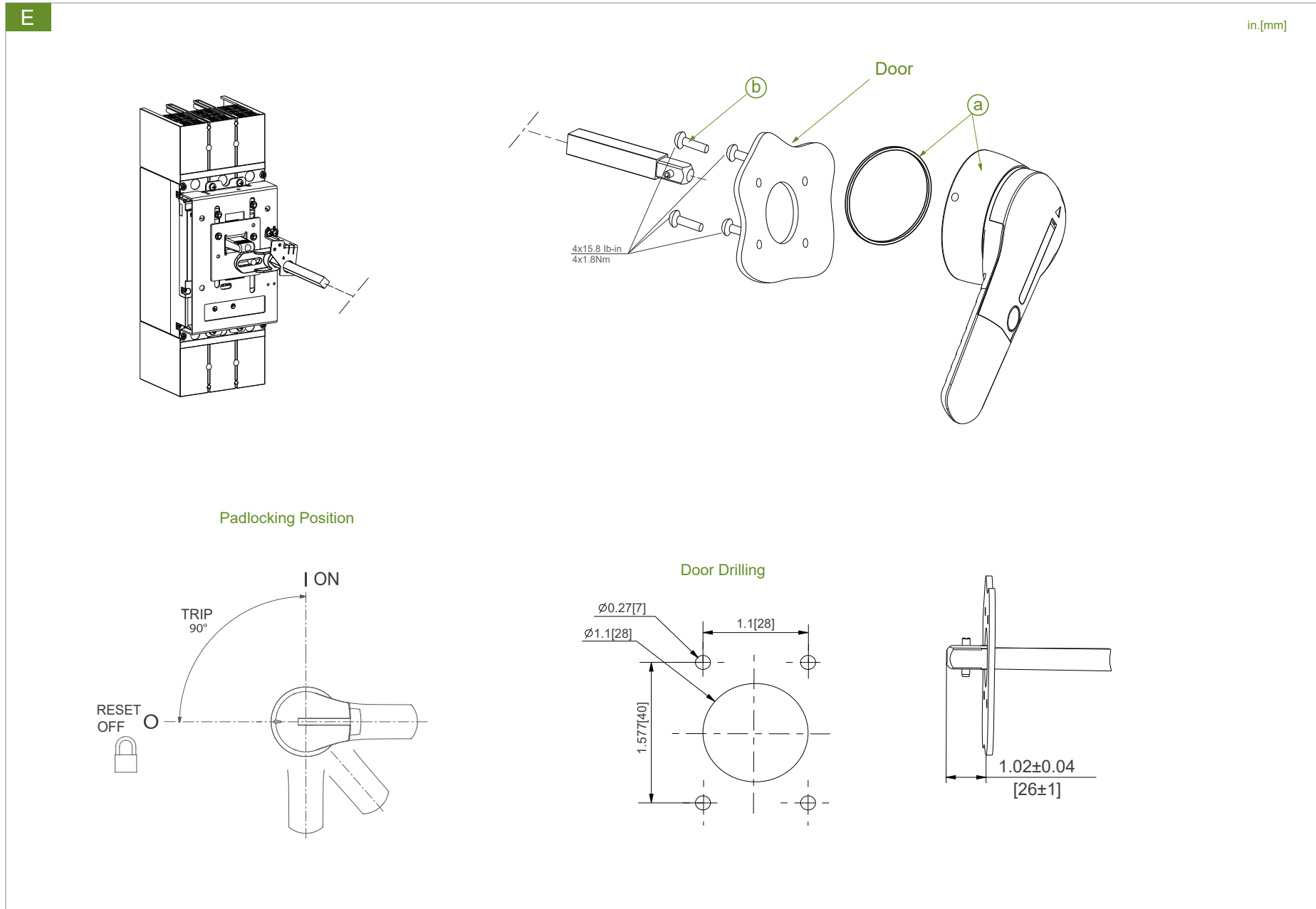
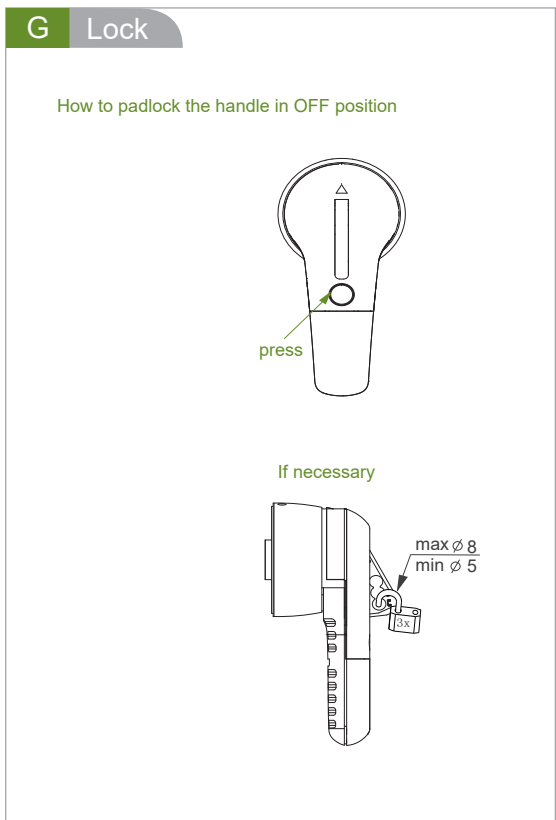
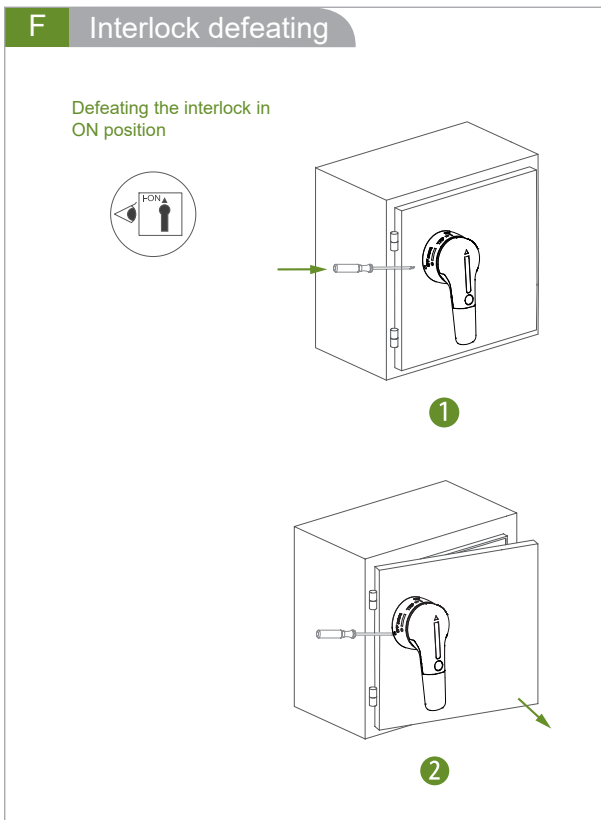
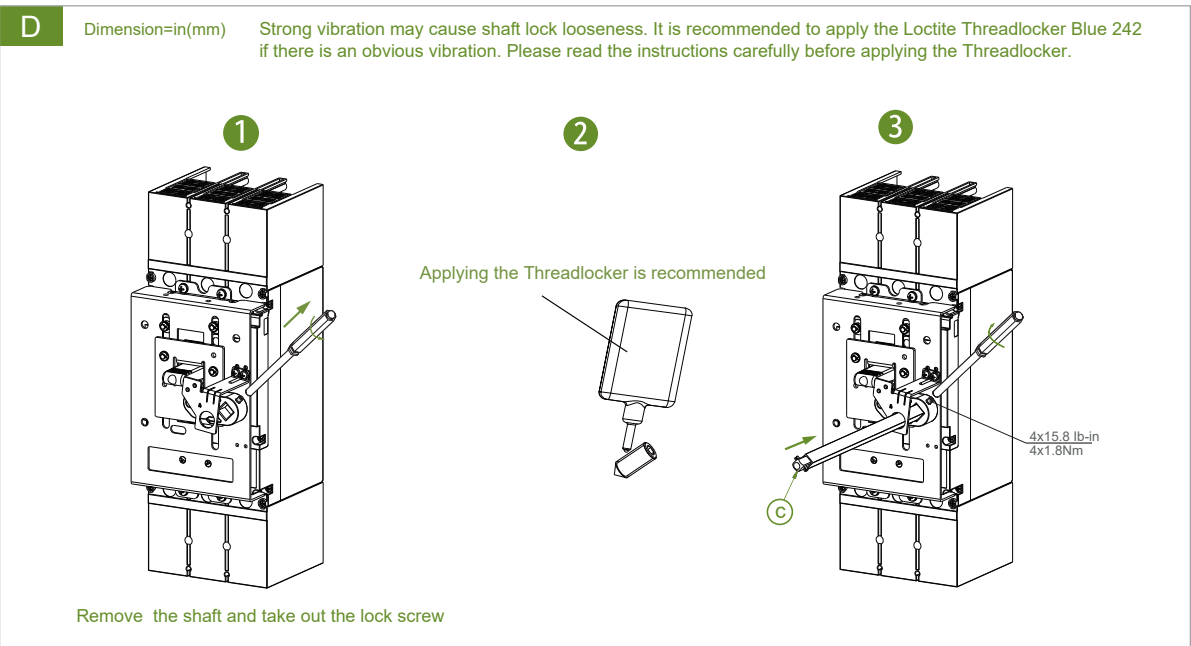
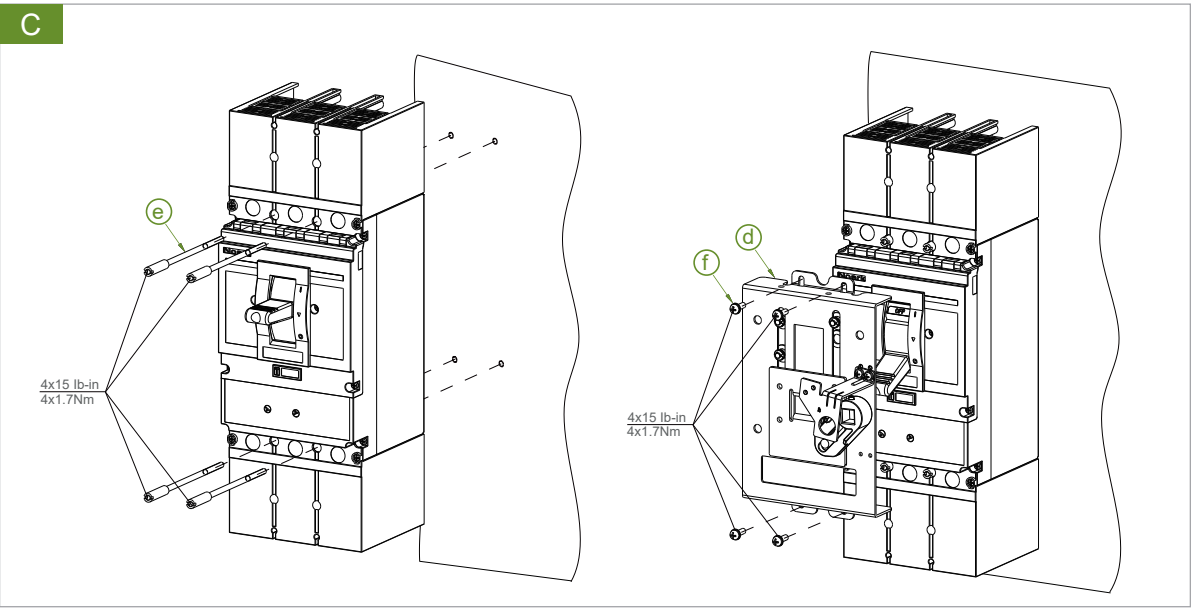


3



B





In order to protect the environment, when the product or its components are scrapped, please dispose of it as industrial waste or hand it over to the recycling station for disaggregation, recycling and reuse according to relevant national regulations.